

Heavy Duty Rural Mailboxes



4850

HEAVY DUTY RURAL MAILBOXES

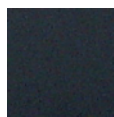
U.S.P.S. APPROVED

Made entirely of aluminum, Salsbury U.S.P.S. approved 4800 series heavy duty rural mailboxes feature a 1/8" thick extruded aluminum body and a 1/8" thick die cast aluminum front door and rear cover. Heavy duty rural mailboxes also feature a durable powder coated finish available in four (4) contemporary colors and include an adjustable red signal flag and a magnetic door catch. The die cast door is attached to the body with a full width stainless steel hinge allowing for smooth operation. Heavy duty rural mailboxes can be mounted on standard, classic, decorative or deluxe mailbox posts (see pages 52-55), spreaders (see page 52) or a base of your choice. Rural mailboxes are approved for U.S.P.S. curbside mail delivery.

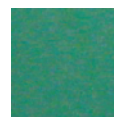
4850 Rural Mailbox

- 7-1/2" W x 9-1/2" H x 20-1/2" D
- 15 lbs.
- \$75.00

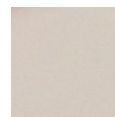
Specify



Black



Green



Beige



White

REPLACEMENT FLAGS

Made of heavy duty 1/4" thick die cast aluminum, mailbox replacement signal flags have a durable powder coated red finish and easily attach to heavy duty rural mailboxes. Mailbox flags include stainless steel mounting hardware.

4816 Replacement Flag

- 2-3/4" W x 8" H x 1/4" D
- 1 lb.
- \$10.00



4816



#4850 on a standard post (#4895)
(see page 52) with custom
numbers / letters (see page 79)
displayed

NEWSPAPER HOLDERS

Made of heavy duty aluminum, Salsbury newspaper holders are a unique option for heavy duty rural mailboxes. Each unit has a solid back and includes mounting hardware to easily attach to mailbox posts and spreaders (see pages 52-55). Newspaper holders feature a durable powder coated finish available in four (4) contemporary colors.

4815 Newspaper Holder

- 7-1/4" W x 4-1/2" H x 16" D
- 10 lbs.
- \$40.00

Specify • Black
• Green
• Beige
• White



4815



(3) #4850's and (3) #4815's on (3) wide spreader (#4883) mounted on a standard post (#4895) (see page 52) with custom numbers / letters (see page 79) displayed



Flag

heavy duty 1/4" thick die cast aluminum signal flag with stainless steel mounting hardware

Catch

secure magnetic catch

Reinforcement

ridges formed along the length of the unit provide added strength

Weather-proofing

an interior rib prevents water from entering the mailbox

Handle

ergonomically designed over sized handle

Door

heavy duty die cast aluminum door

Hinge

concealed heavy duty full width stainless steel hinge



Strength

heavy duty U.S.P.S. approved mailboxes are made of 1/8" thick die cast and extruded aluminum



4850 displayed