

Eagle Rural Mailboxes



4855-E

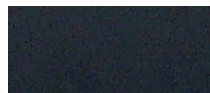
EAGLE RURAL MAILBOXES U.S.P.S. APPROVED

Made entirely of aluminum, Salsbury U.S.P.S. approved 4800 series eagle rural mailboxes feature a 1/4" thick decorative eagle plate, handle and adjustable signal flag available in a durable powder coated gold or silver finish. Each eagle rural mailbox also features a 1/8" thick extruded aluminum body and a 1/8" thick die cast aluminum rear cover and front door. The die cast door is attached to the body with a full width stainless steel hinge allowing for smooth operation and includes a magnetic door catch. Eagle rural mailboxes feature a durable powder coated finish available in four (4) attractive colors and can be mounted on standard, classic, decorative or deluxe mailbox posts (see pages 52-55), spreaders (see page 52) or a base of your choice. Eagle rural mailboxes are approved for U.S.P.S. curbside mail delivery.

4855-E Eagle Rural Mailbox

- 7-1/2" W x 9-1/2" H x 20-1/2" D
- 20 lbs.
- \$125.00

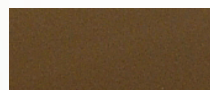
Specify • Mailbox color



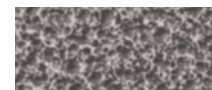
Black



White



Bronze



Pewter

Specify • Decorative eagle plate, handle and matching flag color



Gold



Silver



#4855-E and #4815-E mounted on a decorative post (#4835) (see page 54) with custom numbers / letters (see page 79) displayed

custom
Numbers / Letters see page 79

EAGLE NEWSPAPER HOLDERS

Made of heavy duty aluminum, Salsbury eagle newspaper holders are a unique option for eagle rural mailboxes. Each unit has a solid back and includes mounting hardware to easily attach to mailbox posts and spreaders (see pages 52-55). Eagle newspaper holders feature a durable powder coated finish available in four (4) attractive colors.

4815-E Eagle Newspaper Holder

- 7-1/4" W x 4-1/2" H x 16" D
- 10 lbs.
- \$40.00

Specify • Black
• White
• Bronze
• Pewter



#4855-E in a brick column



4815-E



REPLACEMENT FLAGS

Made of heavy duty 1/4" thick die cast aluminum, eagle mailbox replacement signal flags have a durable powder coated gold or silver finish and easily attach to eagle rural mailboxes. Mailbox flags include stainless steel mounting hardware.

4816-E Replacement Flag

- 2-3/4" W x 8" H x 1/4" D
- 1 lb.
- \$15.00

Specify • gold
• silver



4816-E