

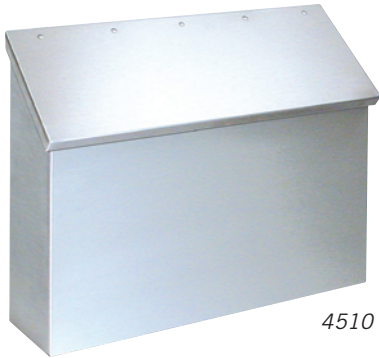
# Stainless Steel Mailboxes



#4525 displayed

## STAINLESS STEEL MAILBOXES - STANDARD AND DECORATIVE

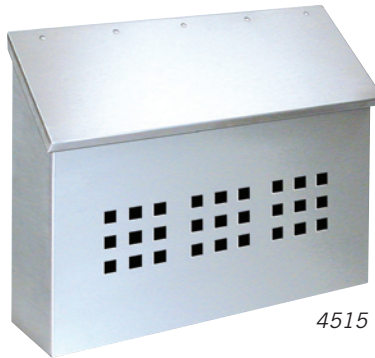
Made of 20 gauge stainless steel, Salsbury 4500 series stainless steel mailboxes are available in standard and decorative styles. Stainless steel standard mailboxes (#4510 and #4520) and stainless steel decorative mailboxes (#4515 and #4525) have a satin finish and are designed to be surface mounted. Stainless steel standard and decorative mailboxes are available in horizontal and vertical styles. Stainless steel decorative mailboxes feature a window grid design and include a privacy plate option to block visibility of the mail. Factory installed stainless steel locking security kits with two (2) keys are available on all models as an option upon request. Stainless steel mailboxes may be used for U.S.P.S. residential door mail delivery.



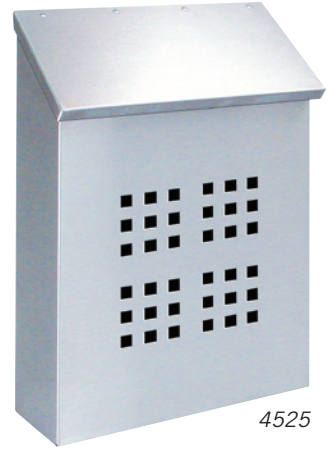
4510



4520



4515



4525

### 4510 Stainless Steel Mailbox - standard

- horizontal style
- 14-1/2" W x 11" H x 3-1/2" D
- 10 lbs.
- \$70.00

### 4520 Stainless Steel Mailbox - standard

- vertical style
- 11" W x 14-1/2" H x 3-1/2" D
- 10 lbs.
- \$70.00

### 4515 Stainless Steel Mailbox - decorative

- horizontal style
- 14-1/2" W x 11" H x 3-1/2" D
- 10 lbs.
- \$70.00

### 4525 Stainless Steel Mailbox - decorative

- vertical style
- 11" W x 14-1/2" H x 3-1/2" D
- 10 lbs.
- \$70.00



#4510 displayed



#4520 with optional security kit (#4521) displayed

### 4511 Security Kit - option for #4510 / #4515

- 13-3/4" W x 3-1/2" D
- slot size: 12-1/2" W x 1" D
- 1 lb.
- \$15.00

### 4521 Security Kit - option for #4520 / #4525

- 10-1/4" W x 3-1/2" D
- slot size: 9" W x 1" D
- 1 lb.
- \$15.00