

The Edgewood™ Lighted Address

Made of cast aluminum, the Edgewood™ is an elegant way to display a home address. These low-voltage fixtures come in 4 styles and 5 finish options with matching raised cast aluminum numbers*. Visible at over 100 feet away, the Edgewood™ provides fast and accurate address identification for guests, deliveries, and emergency vehicles. Patents #US D444,503 and #US D461,847.



Edgewood™ Models



Standard (LTS-1300)*
13-1/2" x 7-1/2" x 2-1/2"
(holds up to five 3" vinyl numbers)



Vertical (LTV-1303)
7-3/4" x 17-1/2" x 2-1/2"
(holds up to three 4" cast numbers
or up to five vinyl numbers)



Oval (LTO-1302)
14-1/2" x 10-1/2" x 2"
(holds up to five 4" cast numbers)



Large (LTL-1301)
13-3/4" x 8-7/8" x 2-1/2"
(holds up to five 4" cast numbers)

Edgewood™ Frame Finishes



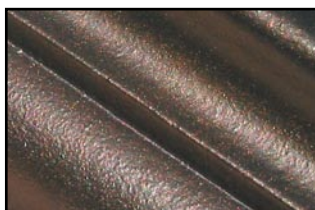
French Bronze



Antique Copper



Pewter



Oil Rub Bronze



Black

Raised numbers that match frame finishes are available.

Edgewood™ Transformers

The Edgewood™ can be attached to your existing low-voltage doorbell transformer. If required, two transformer models are available: plug-in or j-box.



FPS-2018 Plug-in



FTC-1224Q J-Box

Store Display

A store display is available to help you sell our plaques. Please call for details.



* Standard model (LTS-1300) comes with vinyl numbers only.



QUALARC
1-888-800-0153
www.qualarc.com