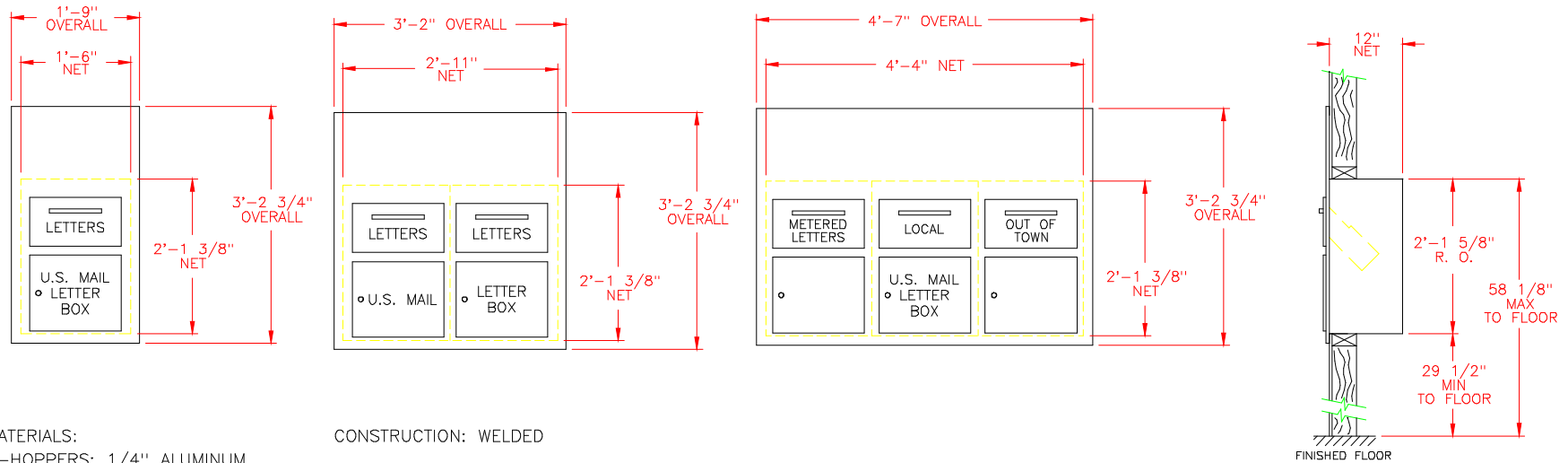


CC71FL/CC72FL/CC73FL INSTALLATION CUT SHEET



MATERIALS:

- HOPPERS: 1/4" ALUMINUM
- FRONT PLATE: 1/4" ALUMINUM

CONSTRUCTION: WELDED

FINISHES:

- CLEAR ANODIZE
- GOLD ANODIZE
- BROWN POWDER COAT

HOPPER OPENING:

- 12 1/2" WIDE x 6" HI

ENGRAVING:

- 1 1/8" HI (AS SHOWN)
- OPTIONAL, AS SPECIFIED

TRIM: OPTIONAL, MATCHING FINISH.

INSTALLATION NOTES:

1. FABRICATE WALL OPENING AT DESIRED LOCATION TO ROUGH OPENING DIMENSIONS AS SHOWN.
2. DRILL HOLES IN TOP AND BOTTOM OF COLLECTION UNIT SIDE PANELS; AND LEFT, CENTER AND RIGHT (AS NECESSARY) OF COLLECTION UNIT TOP AND BOTTOM PANELS. LOCATE HOLES AT ONE-HALF THE WALL THICKNESS FROM THE BACK OF THE COLLECTION UNIT FRONT PLAE.
3. INSERT COLLECTION UNIT INTO OPENING AND DRILL MOUNTING HOLES INTO OPENING AT SIDE, TOP AND BOTTOM PANEL HOLE LOCATIONS.
4. IF NECESSARY, INSERT ANCHORS INTO MOUNTING HOLES.
5. MOUNT COLLECTION UNIT USING #8 SCREWS.

AUTH AF FLORENCE
 MANUFACTURING COMPANY
 5935 CORPORATE DRIVE
 MANHATTAN KANSAS 66503

CS2006

5-14-01